

**USER'S MANUAL for PRECISION CHUCK**

Products No. P011 and P012

**1.0 OVERVIEW**

The WELLS PRECISION CHUCK is designed to hold 3/32" shanked burrs. It allows quick tool changes while the lathe is running.

P011 PRECISION CHUCK 3/8 TAPER fits a standard 3/8" jeweler's taper shaft.  
 P012 PRECISION CHUCK 1/4 SHAFT fits any chuck that accepts a 1/4" shaft.

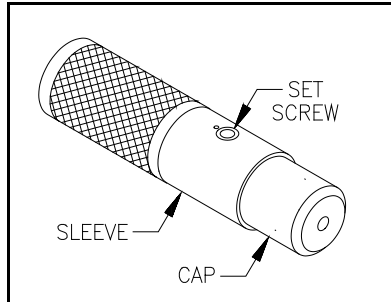


Figure 1. Product No. P011  
**PRECISION CHUCK 3/8 TAPER**

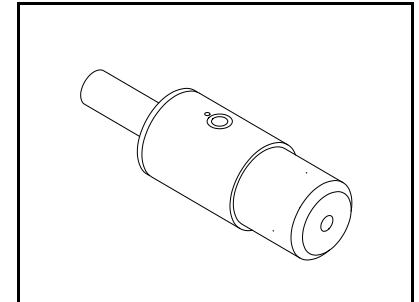


Figure 2. Product No. P012  
**PRECISION CHUCK 1/4 SHAFT**

**2.0 OPERATION**

With the lathe running, clasp the sleeve between the thumb and forefinger to open the chuck. Remove or insert the burr.

**3.0 MONTHLY MAINTENANCE**

- 3.1 With the rollers and cap in place, remove the set screw with a 3/32 hex wrench.
- 3.2 Put a small drop oil into the hole and put the set screw back to its original position flush with the surface of the sleeve. **Do not tighten the set screw below the surface of the sleeve.**
- 3.3 With the set screw in place, remove the Precision Chuck from the lathe and unscrew the cap.
- 3.4 Turn the sleeve clockwise and shake out the rollers.
- 3.5 The rollers should be kept clean and dry. Clean them in solvent and dry thoroughly.
- 3.6 While holding the sleeve to the clockwise position, put the rollers back into the base and screw on the cap.

**4.0 TROUBLE-SHOOTING**

- 4.1 If the sleeve does not return smoothly, the Precision Chuck should be disassembled and cleaned.
- 4.2 If the tool slips, make sure the rollers are clean and dry. If the tool still slips, replace the rollers with new ones.

**5.0 DISASSEMBLY AND CLEANING** (See the Parts List on the reverse side of this sheet.)

- 5.1 Remove the Precision Chuck from the lathe, remove the set screw and the cap.
- 5.2 Turn the sleeve clockwise and shake out the rollers.
- 5.3 Pull out the sleeve 1/4". With a penknife, lift the end of the spring from the hole in the base.
- 5.4 Remove the sleeve and spring taking care not to damage the spring.
- 5.5 With a penknife, carefully remove the spring from the sleeve.
- 5.6 Clean all parts in solvent and dry thoroughly.

**6.0 ASSEMBLY** (See the Parts List on the reverse side of this sheet.)

- 6.1 Insert the end of the spring into the small hole in the sleeve.
- 6.2 Work the sleeve and spring over the base and insert the other end of the spring into the hole in the base.
- 6.3 Turn the sleeve clockwise until the spring tightens and the slot in the base is in line with the set screw hole. Put in the set screw.
- 6.4 While holding the sleeve to the clockwise position, put the rollers back into the base and screw on the cap.
- 6.5 With the rollers and cap in place, remove the set screw and put a small drop oil into the hole. Put the set screw back to its original position flush with the surface of the sleeve. **Do not tighten the set screw below the surface of the sleeve.**

# WELLS

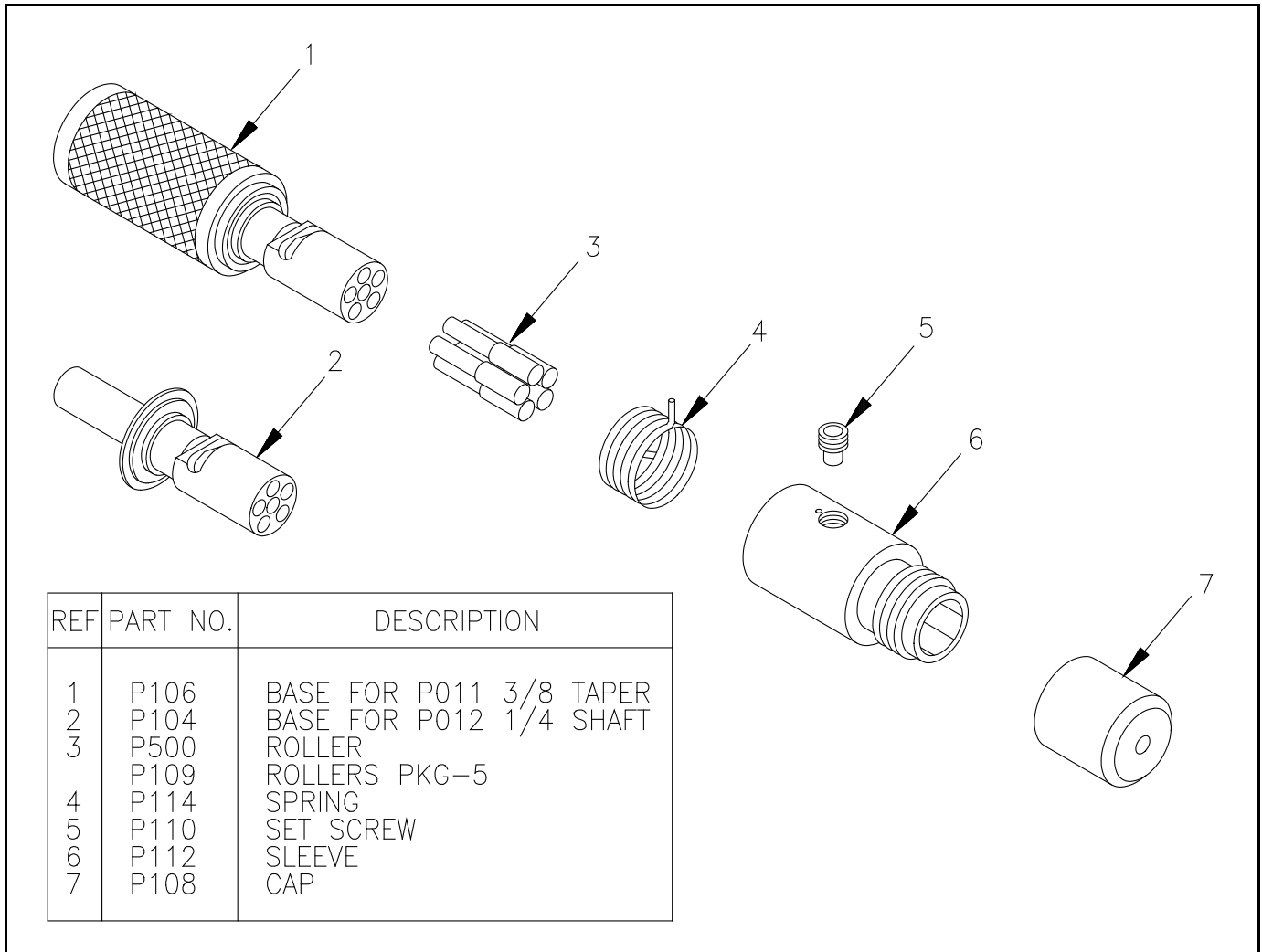
DENTAL, INC.

5860 FLYNN CREEK ROAD  
P.O. BOX 106  
COMPTCHE, CA USA 95427  
PHONE (707) 937-0521  
1 800 233-0521  
FAX (707) 937-2809

## PARTS LIST

**PRECISION CHUCK 3/8 TAPER**  
Product No. P011

**PRECISION CHUCK 1/4 SHAFT**  
Product No. P012



REF	PART NO.	DESCRIPTION
1	P106	BASE FOR P011 3/8 TAPER
2	P104	BASE FOR P012 1/4 SHAFT
3	P500	ROLLER
	P109	ROLLERS PKG-5
4	P114	SPRING
5	P110	SET SCREW
6	P112	SLEEVE
7	P108	CAP